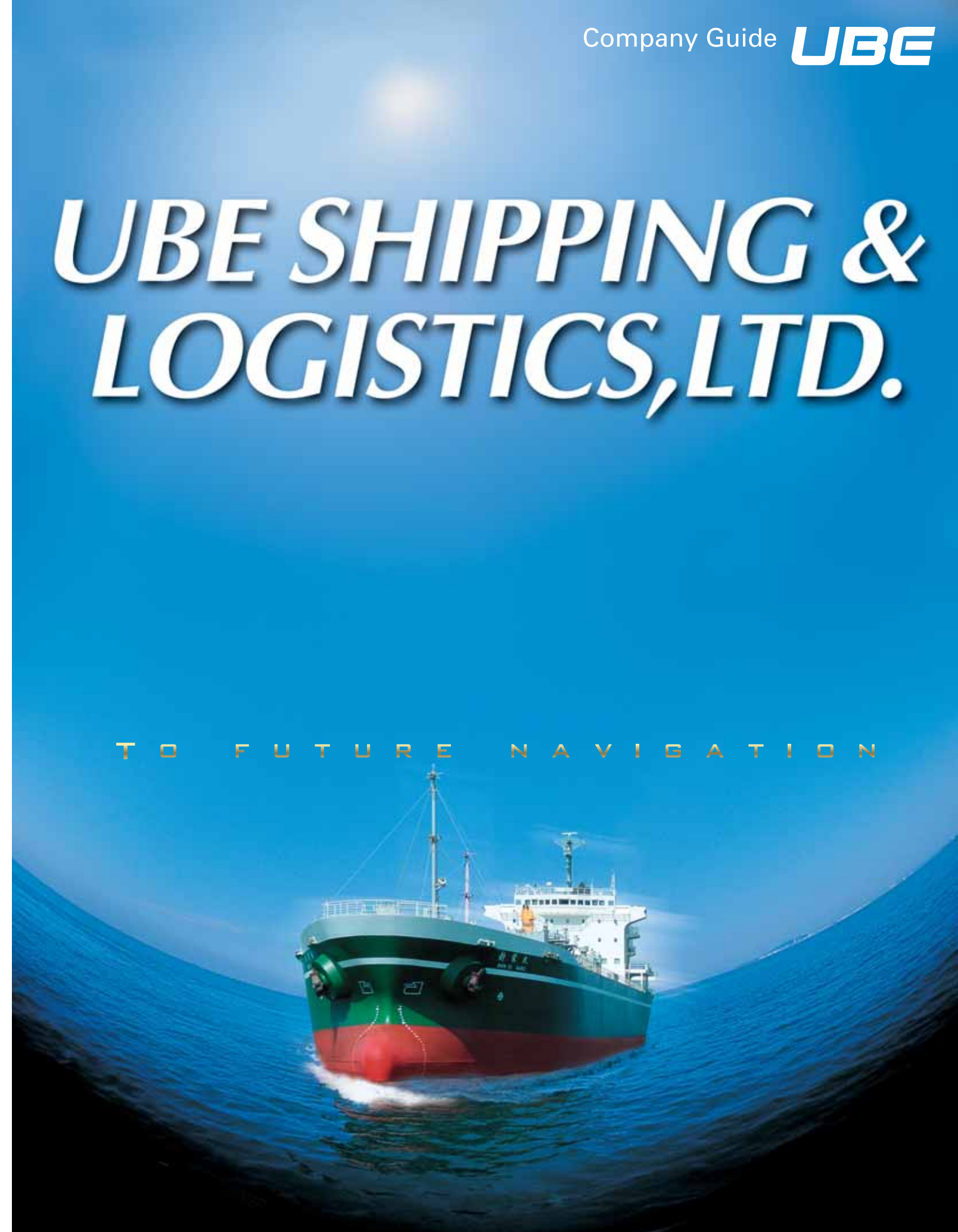


UBE SHIPPING & LOGISTICS, LTD.

UBE SHIPPING & LOGISTICS, LTD.

1-5-5 Minato-machi, Ube,
Yamaguchi Prefecture 755-0027 Japan
Tel: +81-836-31-1181 Fax: +81-836-34-1183

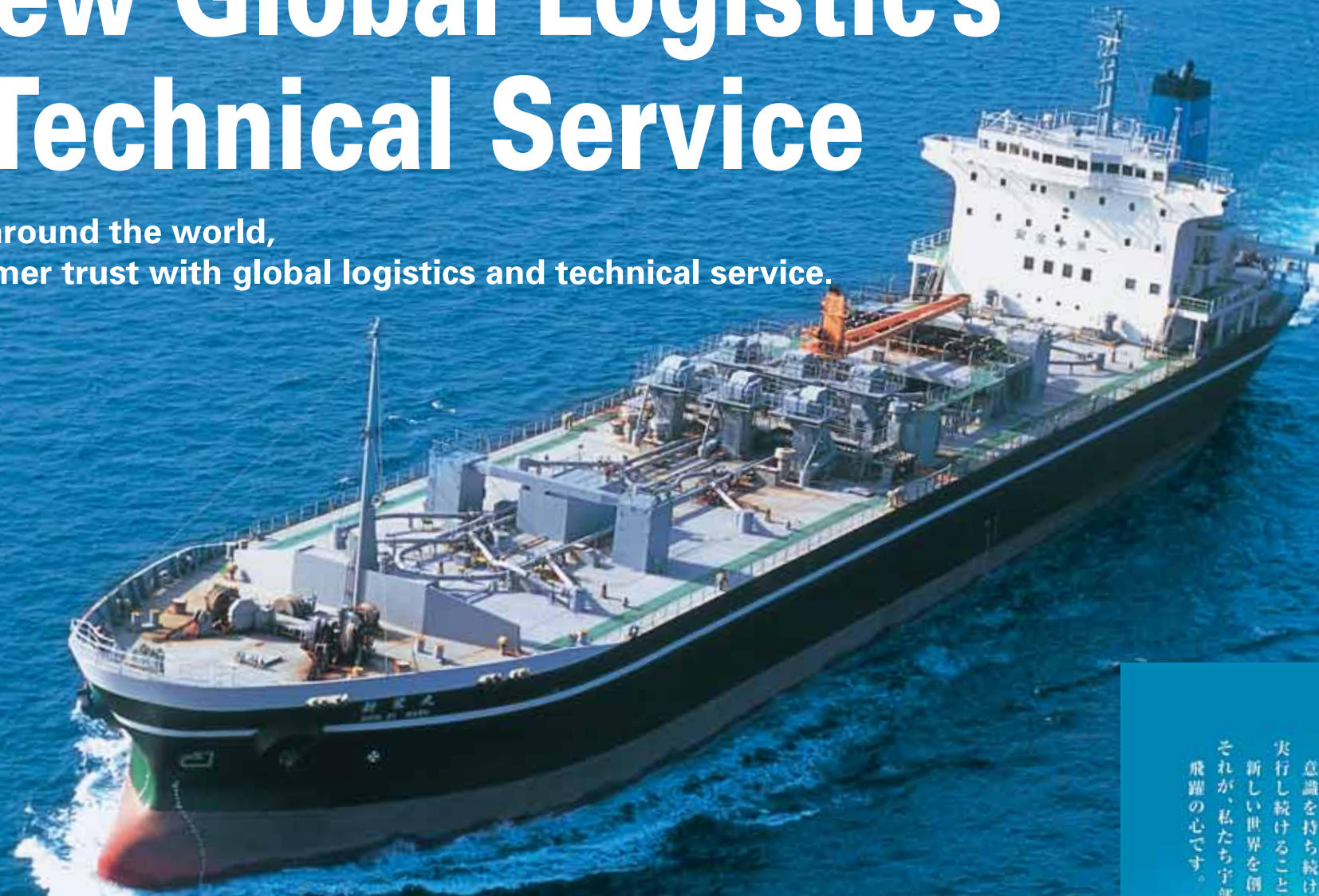
T O F U T U R E N A V I G A T I O N



UBE SHIPPING & LOGISTICS, LTD.

Taking a great leap for the Future by New Global Logistics and Technical Service

In Japan and around the world,
earning customer trust with global logistics and technical service.



Marine transport has developed into global logistics, assuming critical importance in the rapidly-globalizing 21st-century economy, and shipping has become more diverse and complex than ever before.

Ube Shipping & Logistics, Ltd. handles the full range of transportation and distribution from domestic marine shipping and port and harbor operations to fully-integrated multi-modal international transport. In line with our strong position on corporate social responsibility we are serious about earning and keeping the trust of our customers around the world through Innovative Change, Challenge, Creation.

We are building on the rich store of experience and advanced technology we have accumulated over the years since our establishment to actively develop our trading, container, and engineering business sectors. We will continue to pioneer the future in global logistics and technical service, and contribute the local community and the preservation of the marine environment.

変革 挑戦 創造 飛躍

変わろうとする意識を持ち続けること。実行し続けることで、新しい世界を創り出し、飛躍の心です。

これが、私たち飛躍の心です。

宇部興産海運(株)経営基本理念
「USL・CSR」の実行、

1. 経済的側面
(利益の継続的向上・リスクマネジメント)
2. 環境的側面
(環境保全・保安防災・設備・労働災害0)
3. 社会的側面
(地域貢献・コンプライアンス・従業員福利)

③側面を総合的に捉え、企業価値の向上を目指す。

宇部興産海運株式会社

INDEX



03 | Container Business
(International Trading & Logistics Division)



05 | Coastal Shipping
(company vessels) (Shipping Division)



06 | Coastal Shipping (time charter vessels)
(Shipping Division)



07 | Technical Consultant Business
(Technical Division)



09 | Harbor Transport Business
(Harbor Operations Division)

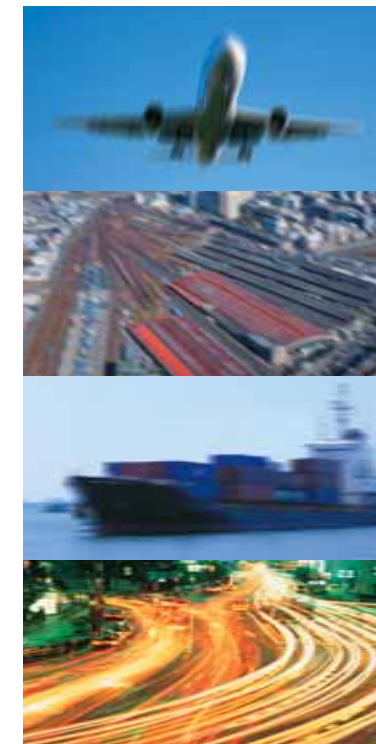


Container Business (integrated international multi-modal transportation)

Ube Shipping furnishes faster, more reliable and safer service as a freight forwarder to meet diverse customer needs.

Integrated international Multi-Modal Transportation

Through tie-ups with major international freight forwarders, we offer an integrated freight service on a global scale. Combining sea, air and land transportation makes door-to-door service simple and fast. Let us propose the optimal transport system for your special needs.



Container Liner Service

Containerships from global lines call at Ube weekly, providing access to major ports in North America, Europe, and around the world. We handle shipping agent services, terminal operations, and customs brokerage, minimizing transport time and expense.



Trading Business

Our clients are primarily in Europe and Asia, with particular focus on ceramic and chemical products, based on our strong relationships with manufacturers, customers and banks.



Trading Agency

We apply the experience and expertise gained through years of work in the transport field to handling procedural matters, leaving trading firms to concentrate on business.

Import/Export Customs Clearance

As a customs agent and as a registered specialist we have a wealth of experience in import and export procedures, utilizing Sea-NACCS for quick and accurate clearance. We are prepared to handle all customs services, including preparing complex shipping documents, paying duties and submitting applications to the relevant bureaus.





Coastal Shipping (company and time-charter vessels)

Our nationwide network of over 48 coastal locations provides marine transport with the speed, dependability and economy customers deserve.

Company Vessels

We directly operate 8 dedicated limestone and cement carriers, with a gross transport capacity of 95,000 tons: one of the largest coastal fleets of its type in Japan. The cement carrier is the Shin'ei Maru, one of the largest in Japan at 20kt deadweight.



From Hokkaido in the north to Okinawa in the south we deliver cement, limestone and other products to more than 48 coastal service stations nationwide operated by Ube-Mitsubishi Cement Corporation. We have applied our skills in navigation, crews

and maintenance management to construct a safety management system based on ISM codes, and acquired ISM certification in December 2000, making it possible to offer our clients better service than ever. Industry demands increased transport efficiency, and our sophisticated vessel management system, backed up by a high-speed land-sea communications system, helps maintain a high safety level.

Time-Charter Vessels

We operate a total of 22 time-charter vessels, and an additional 600 trip charters annually, handling a wide range of marine transport including cement materials, lime, and industrial chemical on general purpose freighters; limestone carriers; and special-purpose tankers, all under our motto of "rapid, dependable and economical." We are expanding our fleet and operations to handle increasing demand, meeting customer requirements for everything from small lots to chartered vessels with rationalized service.





Technical Consultant Business

Ube Shipping provides state-of-the-art technical customer support for safety, from technical maintenance on land and sea, to consulting in International Safety Management (ISM).

Vessels

Planning specialized vessels for carrying cement, fly ash or limestone; maintenance support for hulls and cargo machinery.

We provide technical consulting and shipbuilding supervision for the entire process, including vessel design and commissioning, as well as repair specifications, estimates, shipyard selection and supervision. We also inspect and repair main engines, steering gear, propellers and generators, and auxil-

iary machinery (boilers, water purifiers, pumps, etc.).

Our experience with cement carriers enables us to sell and install cement-handling machinery, pumped transport system and loading systems, while our proprietary cargo handling system checklist ensures periodic inspection and adjustment of freight-handling machinery for continuing maintenance.

Land

Plant equipment maintenance

Our many years of experience in operating and maintaining marine diesel engines enables us to rapidly and accurately identify faults with diesel generator facilities. With in-plant maintenance, including carefully monitored inspection and adjustment during periodic repair, we are able to ensure long-term low operating cost.



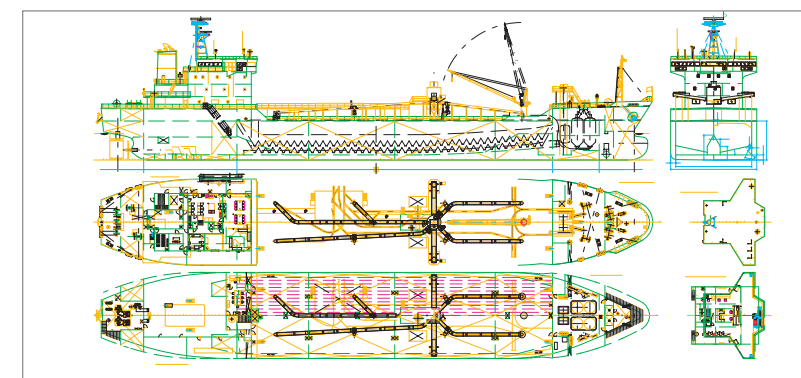
Provision of Technical Expertise

We provide knowledge and operational support in International Safety Management (ISM) for domestic vessels.

We determine the best ISM for your particular organization and scale, and provide needed manuals and checklists. Ship-to-shore communication systems allow you to rapidly and efficiently exchange information.

We are also involved in joint academia/government/industry R&D projects for next-gen vessels, and demonstration trials.

- Vessel operation utilizing high-speed, large-capacity ship-to-shore communication links
- Application of electric propulsion systems in cement carriers
- Research into navigation, harbor steering and mooring support



Harbor Transport Business

Harbor Transport Business

As a stevedoring and warehousing company, we furnish safe and reliable services to meet all our customer needs.

Container Terminal Operation

We handle container terminal operations, including stevedoring, container storage, and delivering containers to/from customers. We also operate a container freight station.

• Container Crane

The first container crane entered operation in February 2006. It was increased container handling volume and reduced transportation costs, and is expected to contribute to the continued development of Ube.

Stevedoring

We handle loading/discharging of cargo for vessels, including project cargo, warehousing and delivery to customers. We furnish safe and reliable service backed up by years of experience and expertise.

Warehousing

We manage three of our own warehouses and three public warehouses. We can handle large volumes of cargo to/from vessels, with storage and marshalling. They can also be utilized as "SP" (stock-point) warehouses.



Shipping Agency

Ube Shipping provides a wide range of services for vessels calling at Ube Port, as the agent for the shipping company and master.

Agency Business

We provide many years of experience and expertise to ensure that all types of domestic and international vessels enter and leave port smoothly and safely, provide advice relevant situations and regulations on routes and berths, interfacing with government agencies (customs, immigration, quarantine, and harbormaster, etc.), and providing pilots, tugs and line handling, etc. as needed.





【Outline】

Name: Ube Shipping & Logistics, Ltd.

Head office: 1-5-5 Minato-machi, Ube, Yamaguchi Prefecture

Established: 1942

Capitalization: 665 million yen

Employees: 351

Business lines: Coastal shipping
 Harbor transport business
 Integrated international multi-modal transportation
 Container business
 Technical consulting
 Industrial waste disposal
 Shipping agency
 Machinery installation (construction), etc.

Certifications: Dec. 2000
 International Safety Management (ISM)
 certification
 Mar. 2002
 Quality management system (ISO9001)
 certification (International Trading Department)

【Company Highlights】

1942 Established as Ube Shipping Service Co., Ltd., amalgamating a number of port and harbor operations firms at Ube Port.

1949 Name changed to Doei Unyu Co., Ltd.

1959 Capitalization by Ube Industries, Ltd.

1964 Coastal shipping started.

1995 Shin Daito Steamship Co., Ltd. and the marine vessel department of Ube Industries, Ltd. absorbed, and name changed to Ube Shipping & Logistics, Ltd.

1996 International container business started.

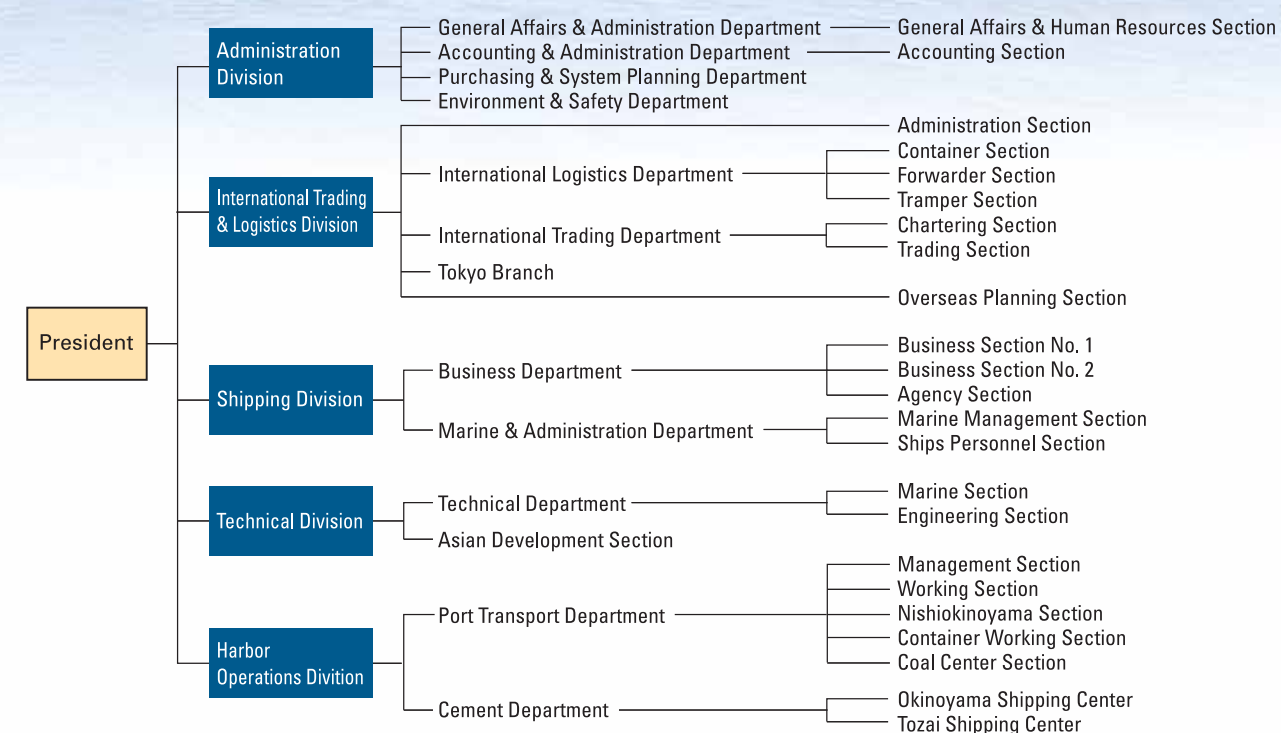
1998 Tokyo Branch opened.

2001 Technical consulting started.

2007 Machinery installation (construction) business started.

2012 70th anniversary.

【Organization】



<Aerial View of Ube Port>



[Access information]

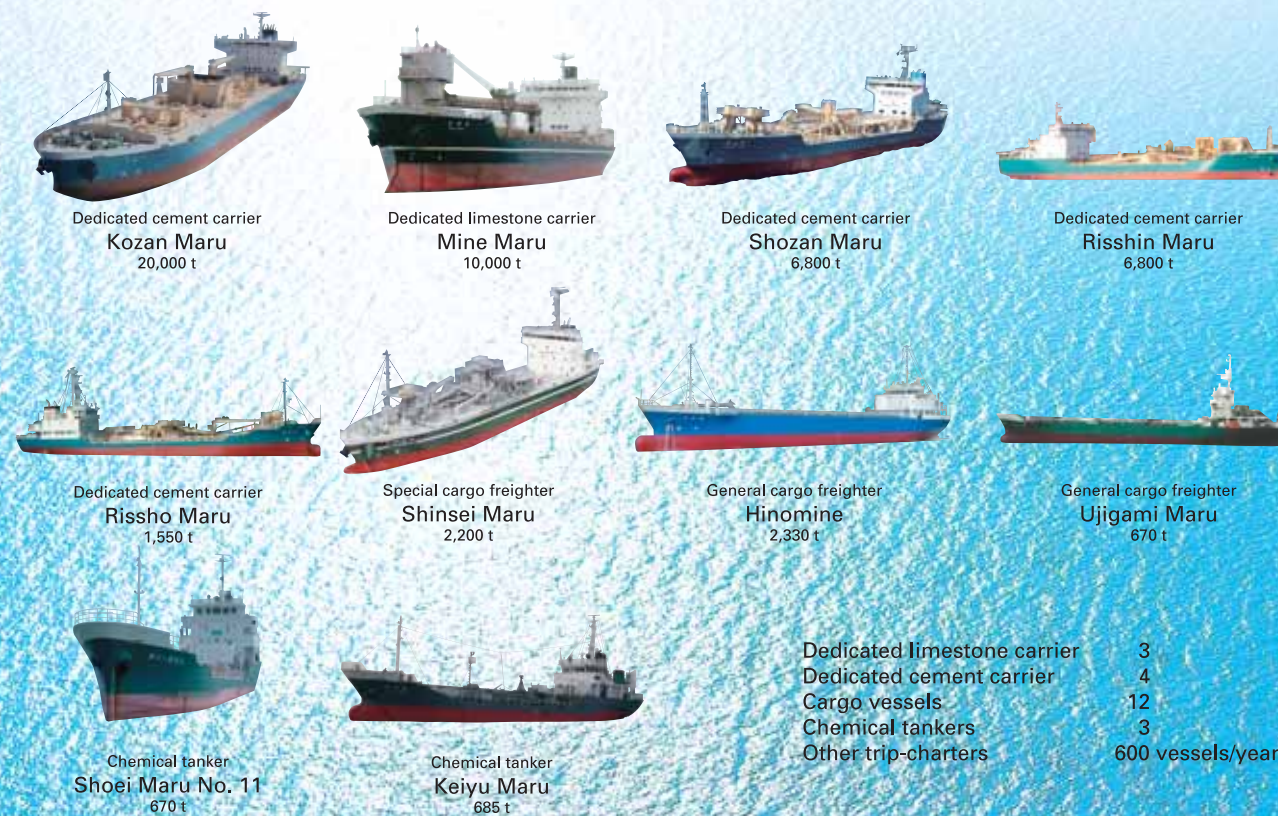
About 10 min. by taxi from Yamaguchi Ube Airport
 About 35 min. by city express bus from JR Shin-Yamaguchi Station to JR Ube-Shinkawa Station
 About 5 min. by taxi from JR Ube-Shinkawa Station
 Sanyo Expressway: 15 min. by car from Ube IC
 Chugoku Expressway: 40 min. by car from Ogori IC

Company Vessels



Time-Charter Vessels

13th Distribution Environment Award, Grand Prize
 Marine Engineering of the Year 2010 Award



Dedicated limestone carrier	3
Dedicated cement carrier	4
Cargo vessels	12
Chemical tankers	3
Other trip-charters	600 vessels/year